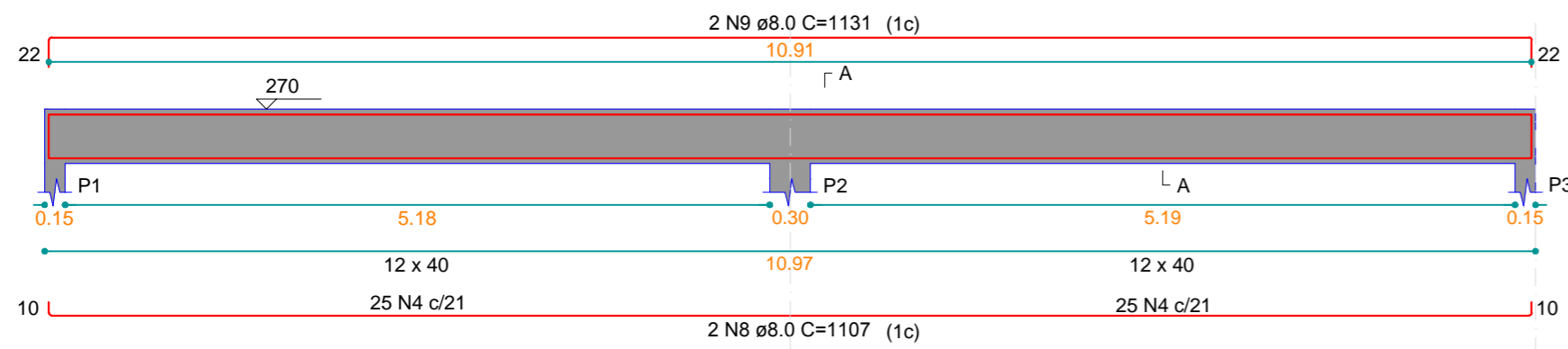
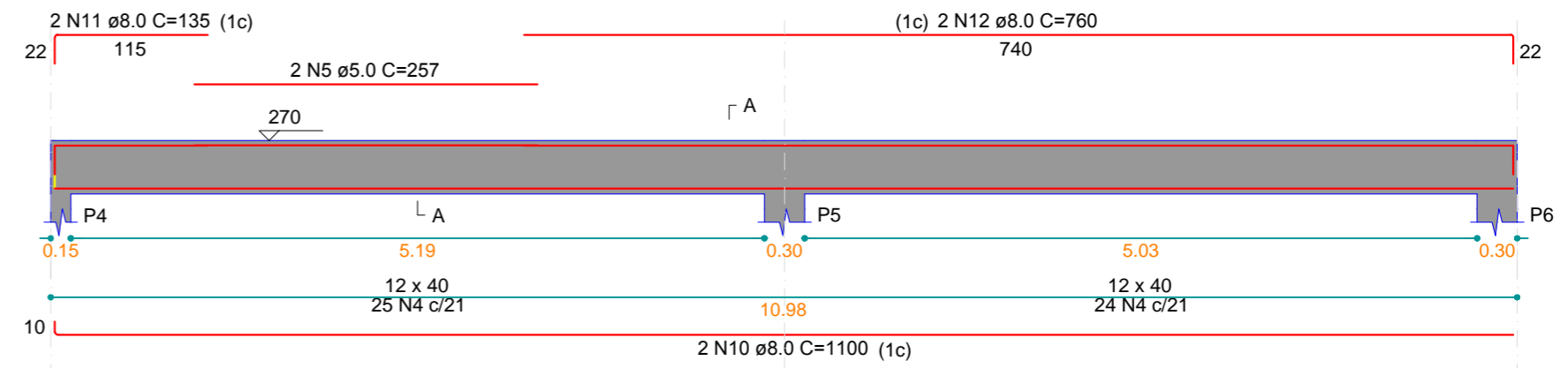


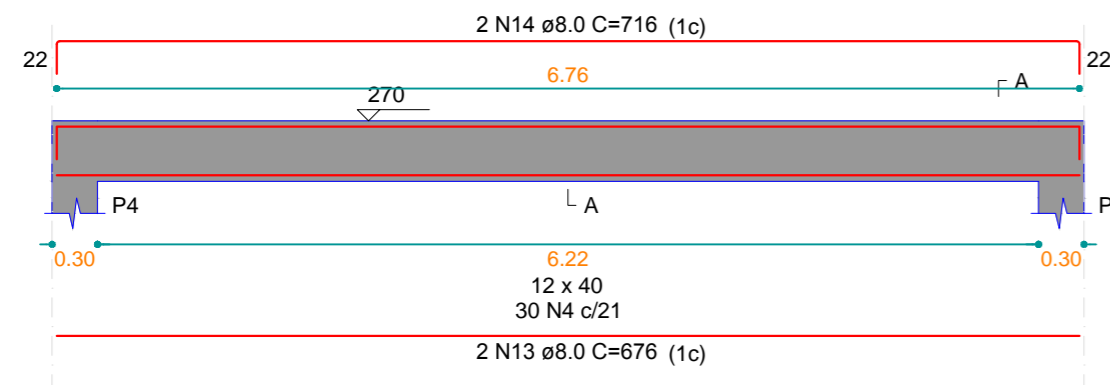
V1\_1  
ESC 1:75



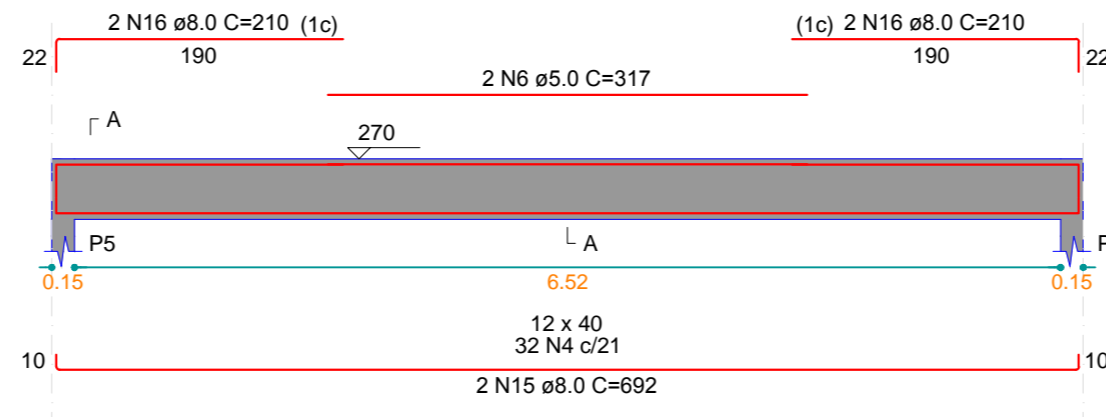
V2\_1  
ESC 1:75



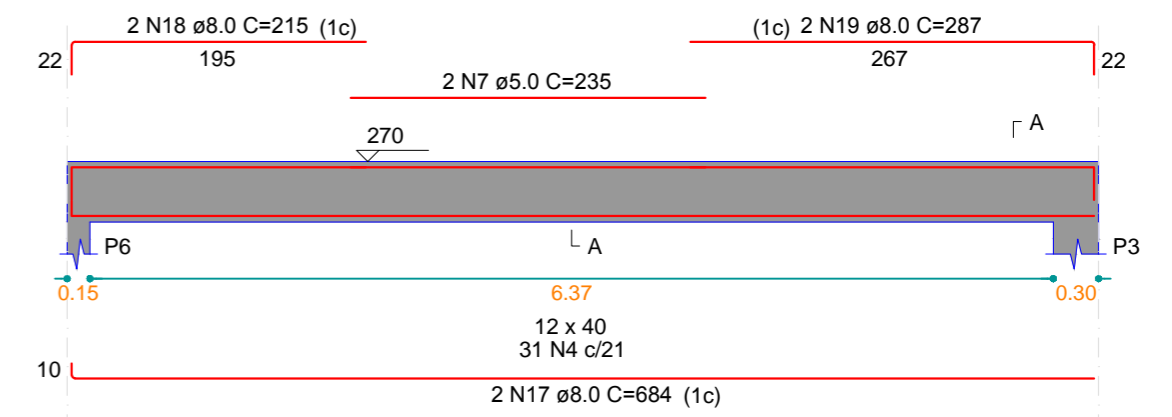
V3\_1  
ESC 1:75



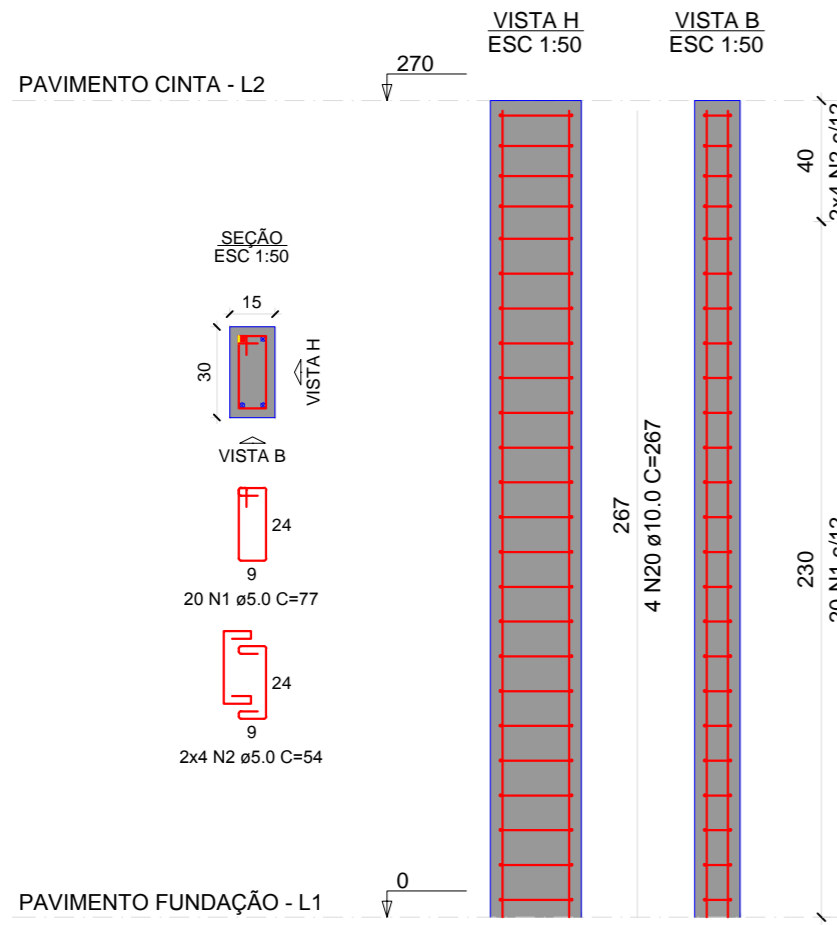
V4\_1  
ESC 1:75



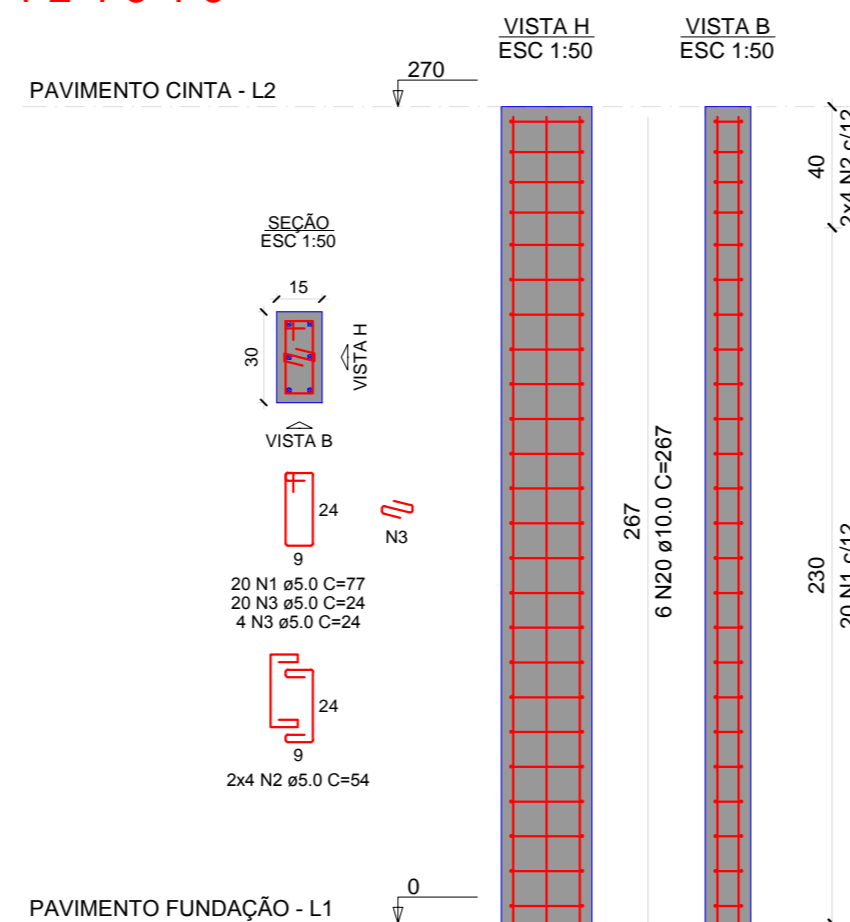
V5\_1  
ESC 1:75



P1=P3=P4



P2=P5=P6



RELAÇÃO DO AÇO

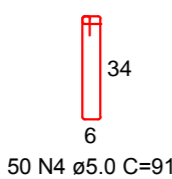
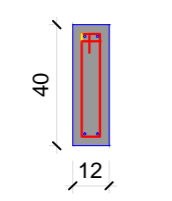
AÇO	N	DIAM (mm)	QUANT	C.UNIT (cm)	C.TOTAL (cm)
CA60	1	5.0	120	77	9240
	2	5.0	48	54	2592
	3	5.0	72	24	1728
	4	5.0	192	91	17472
	5	5.0	2	257	514
	6	5.0	2	317	634
	7	5.0	2	235	470
CA50	8	8.0	2	1107	2214
	9	8.0	2	1131	2262
	10	8.0	2	1100	2200
	11	8.0	2	135	270
	12	8.0	2	760	1520
	13	8.0	2	676	1352
	14	8.0	2	716	1432
	15	8.0	2	692	1384
	16	8.0	4	210	840
	17	8.0	2	684	1368
	18	8.0	2	215	430
	19	8.0	2	287	574
	20	10.0	30	267	8010

RESUMO DO AÇO

AÇO	DIAM (mm)	C.TOTAL (m)	PESO + 10% (kg)
CA50	8.0	158.5	68.8
CA60	10.0	80.1	54.3
CA60	5.0	326.5	55.4
PESO TOTAL (kg)			
CA50		123.1	
CA60		55.4	

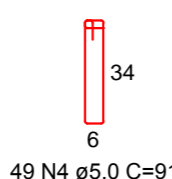
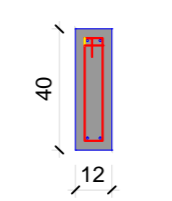
Volume de concreto (C-25) = 2.76 m³  
Área de forma = 53.59 m²

SEÇÃO A-A  
ESC 1:25



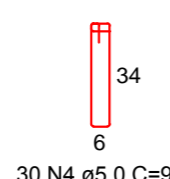
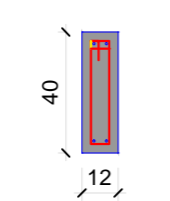
50 N4 ø5.0 C=91

SEÇÃO A-A  
ESC 1:25



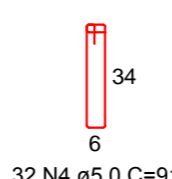
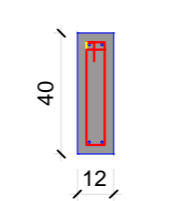
49 N4 ø5.0 C=91

SEÇÃO A-A  
ESC 1:25



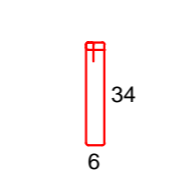
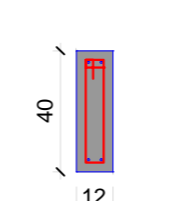
30 N4 ø5.0 C=91

SEÇÃO A-A  
ESC 1:25



32 N4 ø5.0 C=91

SEÇÃO A-A  
ESC 1:25



31 N4 ø5.0 C=91

Visto da Prefeitura Municipal

Responsável Técnico:  
CARLOS ALEXANDRE DE OLIVEIRA  
Assinatura:

PRANCHA:

02<sub>03</sub>

Projeto Estrutural

OBRA: ASSOCIAÇÃO DOS PAIS E AMIGOS DO EXCEPCIONAL - APAE

ENDEREÇO:

ÁREA:

PROPRIETÁRIO: PREFEITURA MUNICIPAL DE GENERAL CARNEIRO - PR

LOCAL: GENERAL CARNEIRO - PARANÁ

DATA:



Avenida Pres. Getúlio Vargas, 601 - Centro  
CEP 84660-000 General Carneiro - Paraná  
Fone/Fax (0\*\*42) 3552 - 1441  
CNPJ: 75.687.681/0001-07  
E-mail: pref.eng@hotmail.com

ESCALA:  
INDICADAS  
DESENHO:  
MARCELA GUIMARÃES  
TÍTULO:  
DIVERSOS